

Installing Tutorial Dcraft Sunroof DC6

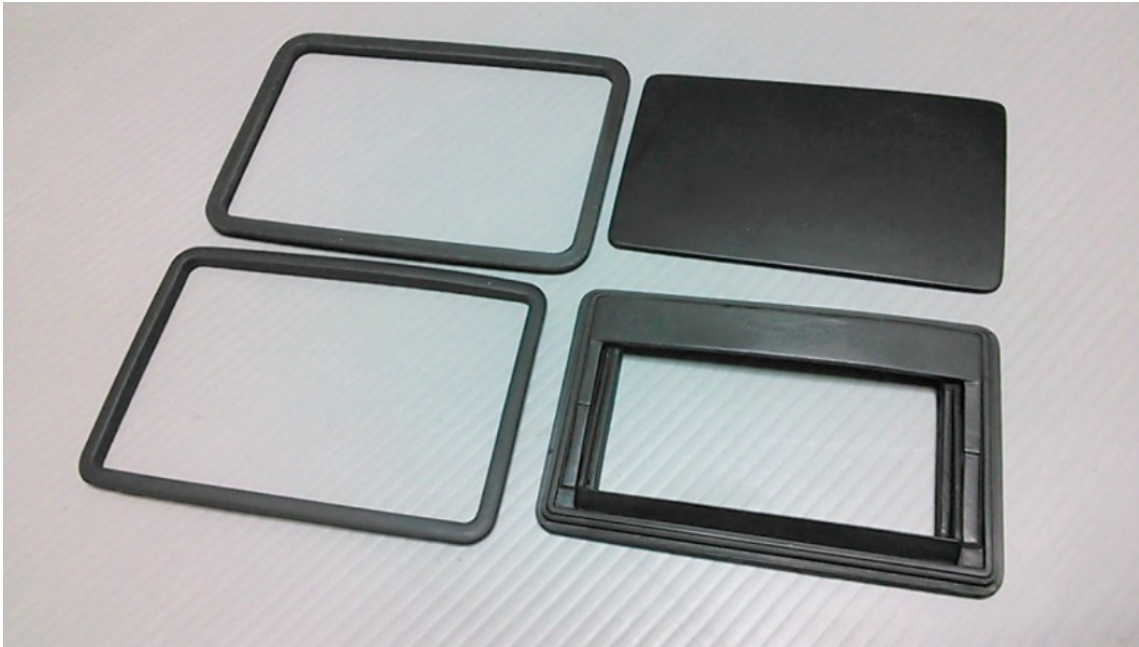
by:

PITTS

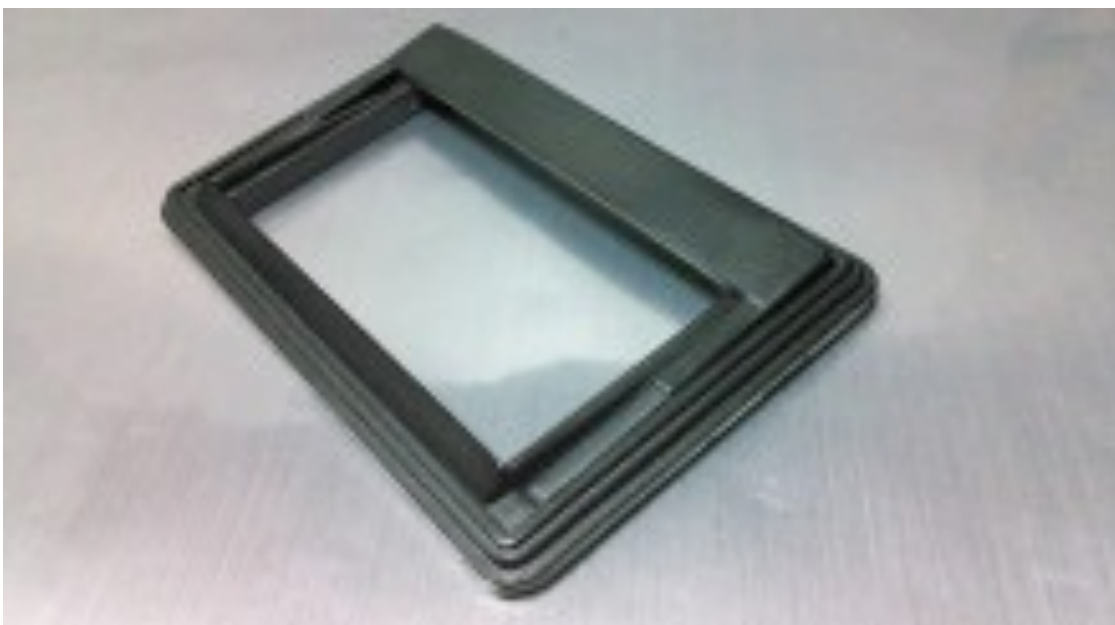


Installing Tutorial Dcraft Sunroof DC6

All parts.



Assembled.

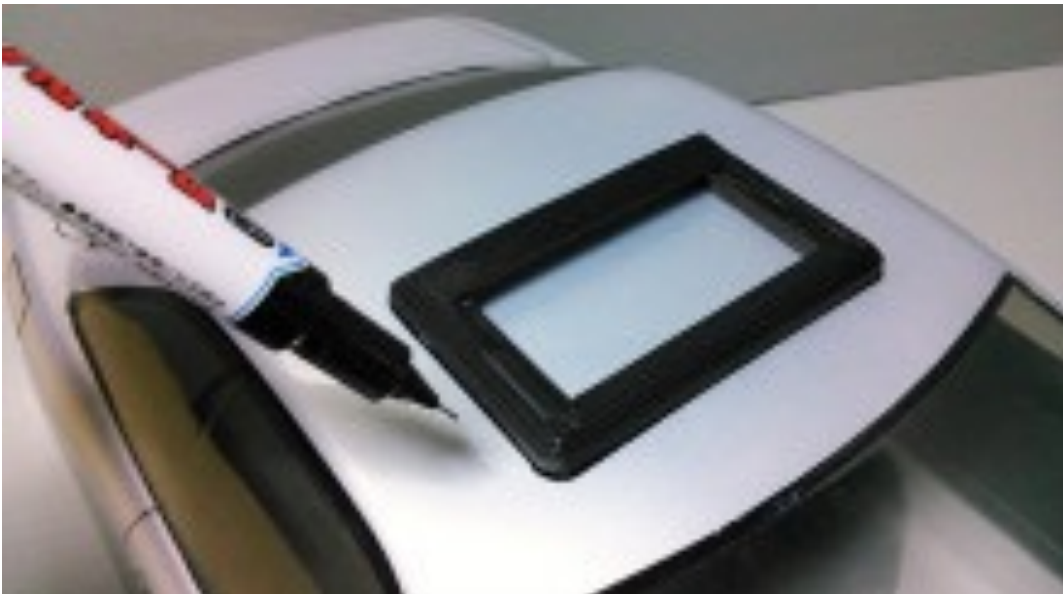


Installing Tutorial Dcraft Sunroof DC6

Take the part with the sunroof 'mechanism' and place it on the roof.

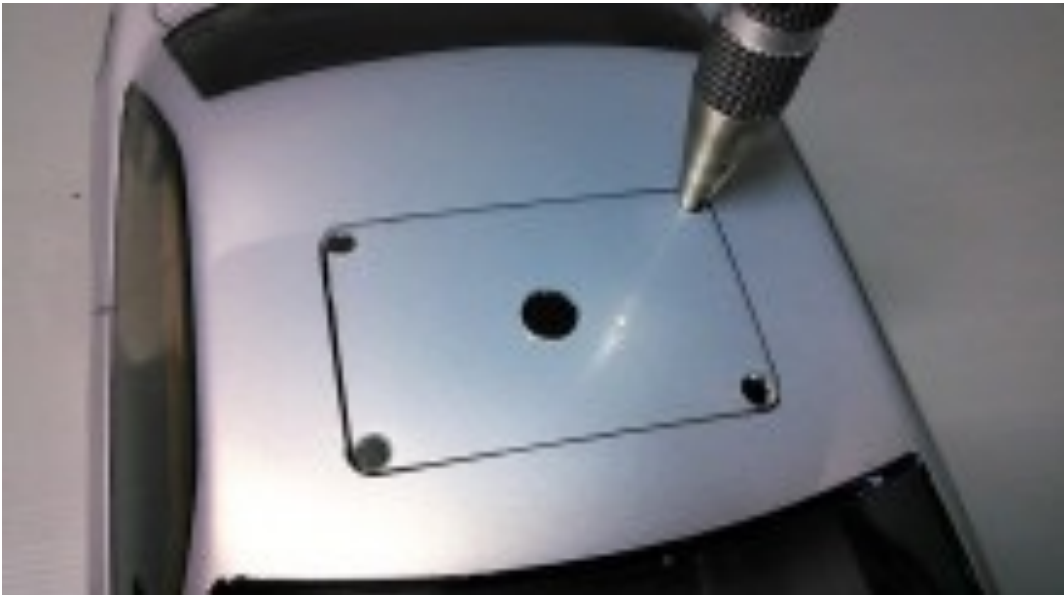


Draw a line around it with a cd marker or thin pencil.



Installing Tutorial Dcraft Sunroof DC6

This is a very handy way to cut out the sunroof:

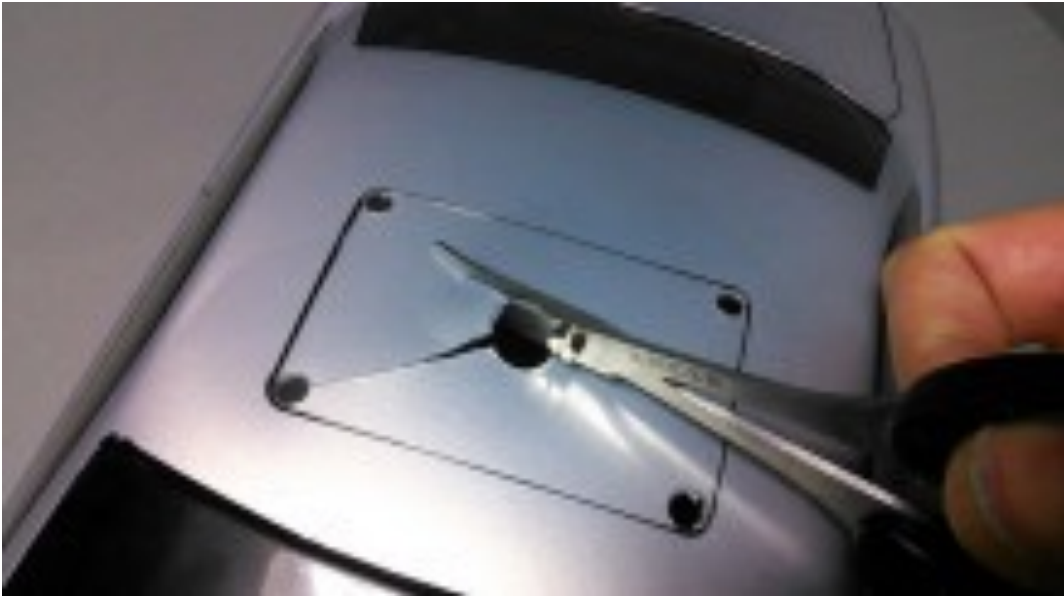


Cut the straight lines with a sharpie knife or utility knife. Not through the whole material just some incisions on the same line.



Installing Tutorial Dcraft Sunroof DC6

Cut with a scissor from the inside to the 4 holes at the corners.

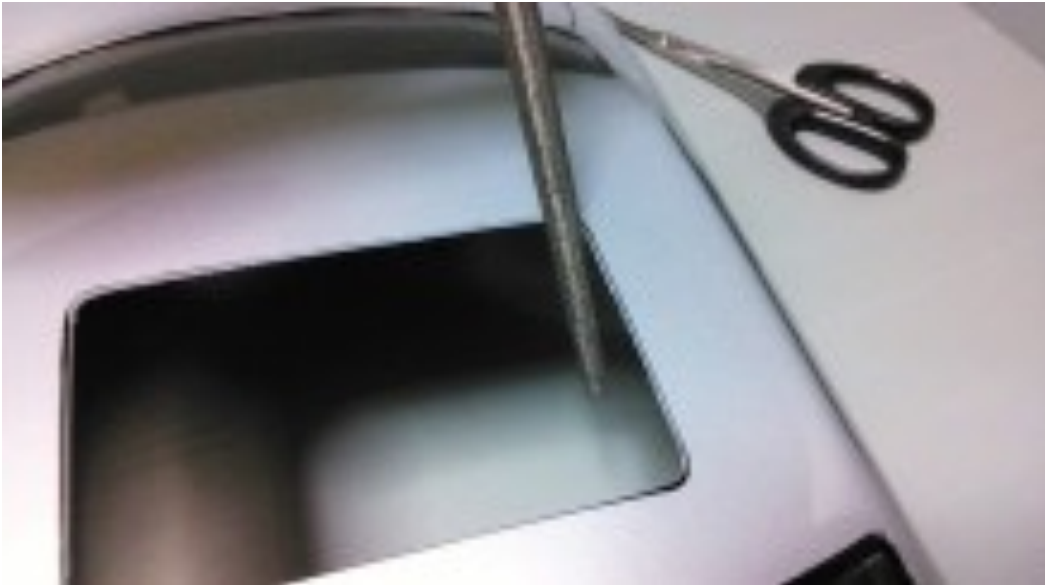


And bend slowly the 4 pieces downwards and upwards so that the material will break loose.



Installing Tutorial Dcraft Sunroof DC6

Check if the frames will fit nicely, if not, grind or use fine sandpaper to make it fit. Use it anyway to make your cut smooth at the end.



Get the two frames and put them on the right side.

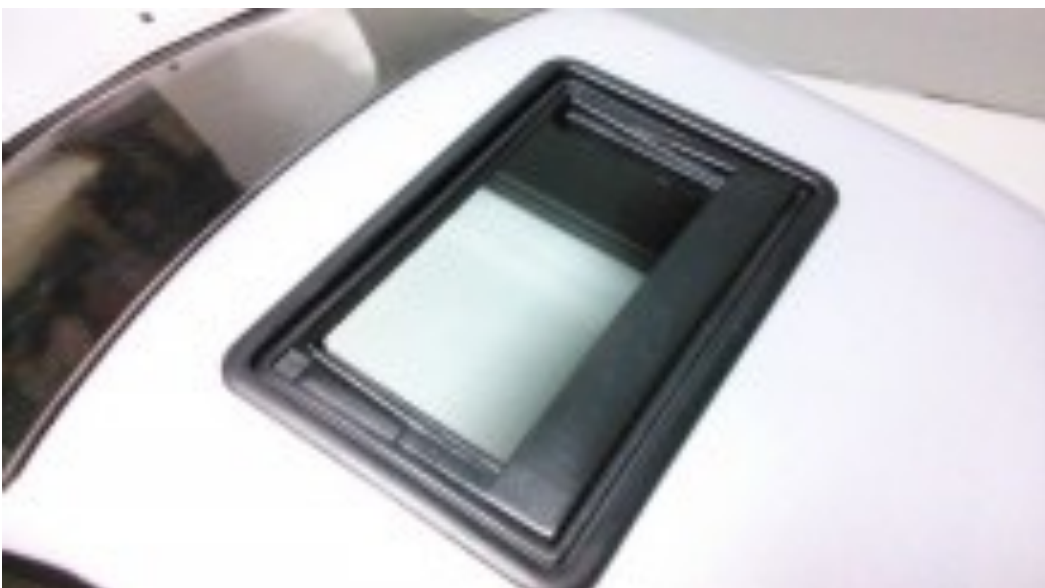


Installing Tutorial Dcraft Sunroof DC6

Press them gently till they click.



Then click from the inside the 'mechanism' part into the frame. Then it will look like this:



Installing Tutorial Dcraft Sunroof DC6

Fixate the frame with gleu or shoe-gleu.



And then fixate the glass panel in the position you want.



Installing Tutorial Dcraft Sunroof DC6



Good luck and sorry about the crappy pics this was the best i could get. Picture credits to Mr. Dcraft.

[Click here](#) to see them into my webstore.

